



UNION keyPRIME™

Patented master keying solution -
Performance that goes beyond standard

Trusted by **Professionals**



ASSA ABLOY

ASSA ABLOY, the global leader
in door opening solutions

UNION master keying heritage and expertise you can trust

Established as a manufacturer back in 1840, UNION's master keying expertise and heritage is second to none – providing master keying services and suite calculations to the UK for over 100 years.

UNION will provide you with an unrivalled master key service for you and your customers - our dedicated, UK based master key team, has over 200 years of combined experience.

UNION keyPRIME™ is produced at our state of the art Willenhall manufacturing facility in the UK, ensuring accuracy and simplicity for your bespoke solution.



Trusted dimple technology for a wide range of applications

UNION's keyPRIME™ patented dimple cylinder offers affordable peace of mind for a range of master key applications.

As standard, UNION keyPRIME™ provides a good level of security and protection for most installations, while the reversible key is an all-new contemporary design, crafted in nickel silver.

UNION keyPRIME™ is simply the right choice for healthcare, education, offices, apartments and more.

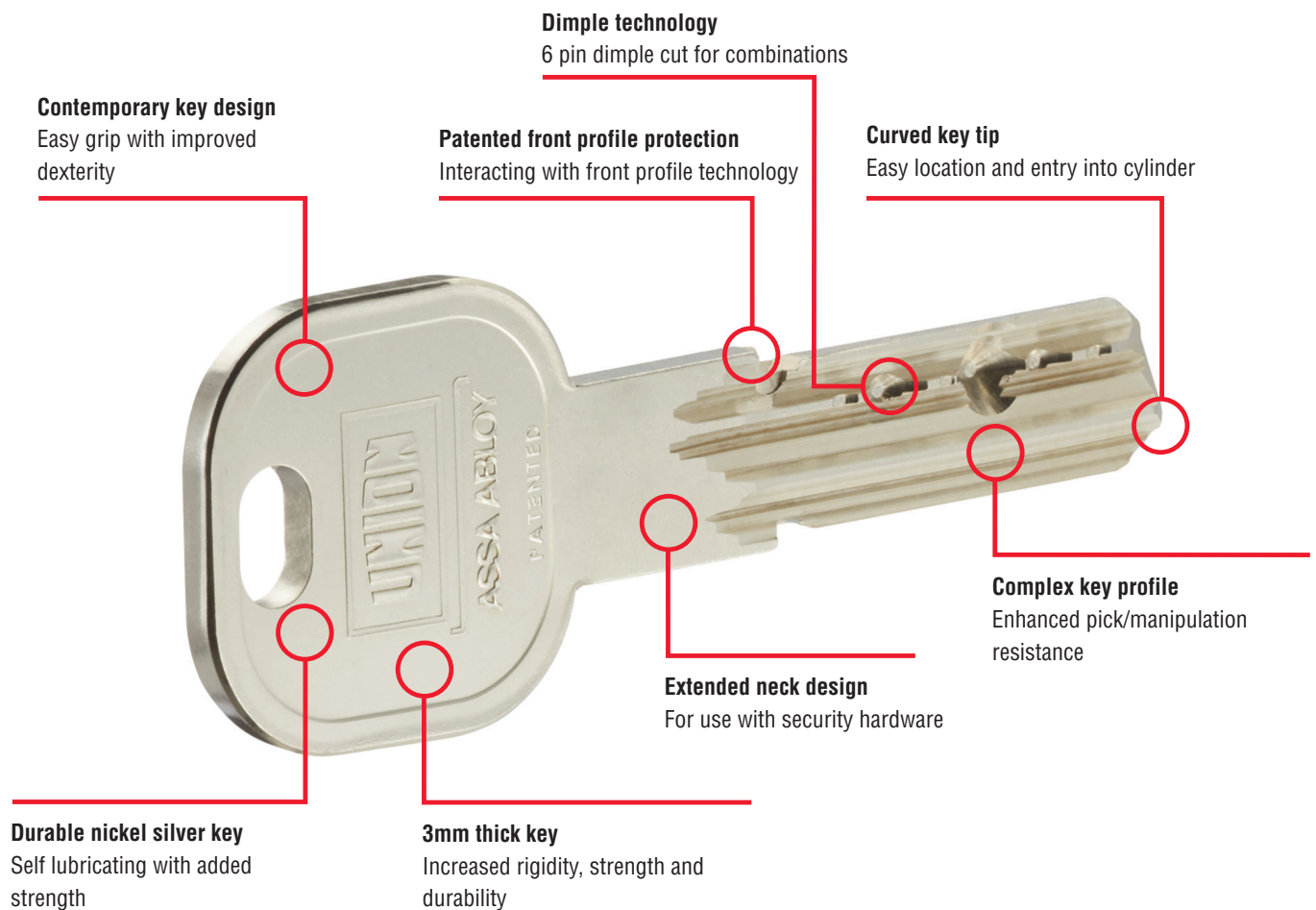
Performance that goes beyond standard

Dimple cylinders combine a technical key profile with a proven pin-tumbler design.

UNION keyPRIME™ is a simple yet reassuring solution with features that exceed many basic, conventional master key systems.

These include patent protection, good master key capability, certified security to the toughest requirements of EN 1303:2015, multiple exclusive profiles, and for single cylinders – an adjustable cam as standard.

Reversible key technology



Secure patented key control

With patent protection until 2036, UNION keyPRIME™ offers secure key control with key blanks only available from approved stockists and dealers.

Contemporary key design

UNION keyPRIME™ features a stylish key that is strong and easy to hold. This contemporary design is made from high quality nickel silver, which offers excellent durability.

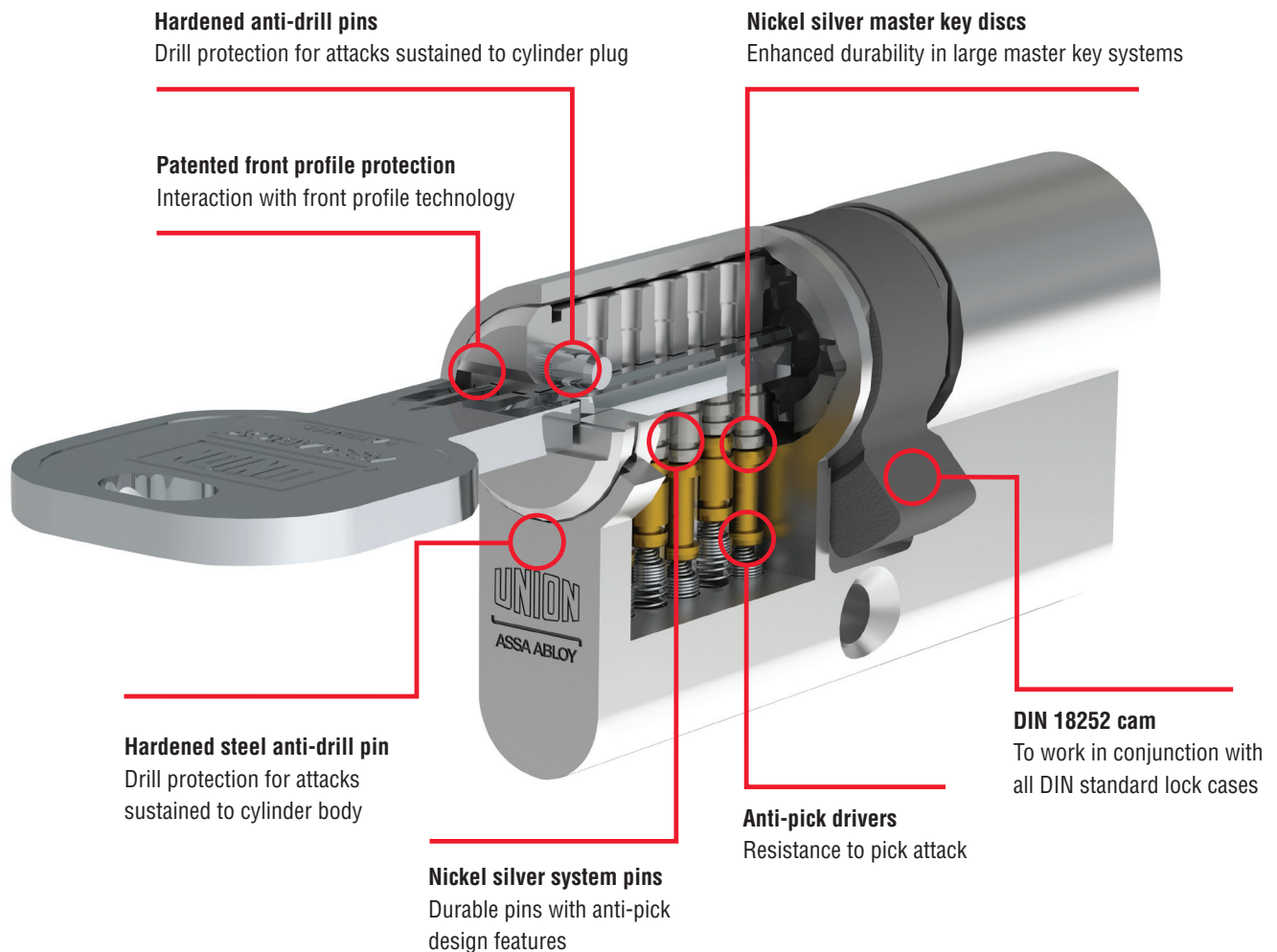
Simple to use

UNION keyPRIME™ offers a reversible system with symmetrical faces and no sharp edges, meaning the key works easily, no matter which way it's inserted.

Master key expertise

With over 200 years of combined experience, UNION's master keying heritage is unrivalled – you can trust our expertise to deliver a market leading service.

High quality technology and design



Hardened anti-drill pins

Drill protection for attacks sustained to cylinder plug

Nickel silver master key discs

Enhanced durability in large master key systems

Patented front profile protection

Interaction with front profile technology

Hardened steel anti-drill pin

Drill protection for attacks sustained to cylinder body

Nickel silver system pins

Durable pins with anti-pick design features

Anti-pick drivers

Resistance to pick attack

DIN 18252 cam

To work in conjunction with all DIN standard lock cases

For commercial, education and healthcare applications

With its patented dimple design and master key capability, achieved by 20 completely new master key profiles, UNION keyPRIME™ allows generation of bespoke master key systems, purposely designed for commercial, education and healthcare environments.

For local government and small businesses

UNION keyPRIME™ is also ideal for local government and small business use. It can be keyed to open just one door or multiple doors with the same key. It is easy to upgrade or replace existing cylinders inside and out for your convenience.

For an optimised master key specification, always consult with a UNION master key specialist as early in the project as possible.

Please contact your Regional Sales Manager for further information.

Great value for money

- Patented - keys only available from authorised partners
- User friendly adjustable cam as standard in single cylinders
- Complex keyway enhances security
- Shared sections available
- Strong and stylish looking key

Clear choices, outstanding value

Euro Cylinders

- Available as a master key solution (MKS) keyed alike (KA) and keyed to differ (KD)
- High quality satin nickel finish
- DIN 18252 cam as standard
- Offset lengths available

Single cylinder

- Lengths starting at 30-10 available in 5mm increments up to 80-10
- Adjustable multi-position cam

Double cylinder

- Lengths starting at 30-30 available in 5mm increments up to 80-80

Key and turn cylinder

- Lengths starting at 30-30 available in 5mm increments up to 80-80
- Matching core, thumb turn and body finish



Padlock

- For both indoor and outdoor applications such as storage and gates
- Ø8mm hardened boron steel shackle - Chrome-plated body
- 25mm, 50mm, 75mm shackle clearances
- Key retaining
- Optional dust cover protects keyway and enhances endurance



Rim cylinder

- For use with night latches
- Ø32mm face - Ø29mm body 4mm tailpiece length for most common installations



Cam lock

- For use as letterbox, drawer or cabinet locks
- Ø33mm face diameter - Ø22mm body diameter
- Key retaining to ensure the lock is never left unlocked
- Optional angled cam



*Environmental Product Declaration (EPD) available. Find out more on www.uniononline.co.uk/unionkeyprime

Superior security

- 5 minutes drilling resistance
- 15kN pulling resistance¹
- Picking resistance
- Bumping resistance²
- 500,000 cycles performance in durability test³
- 240 hours corrosion resistance, above and beyond the 96 hours standard
- Certified security, compliant with EN 1303:2015⁴

1 According to EN 1303:2015

2 Key to differ only

3 Accelerated test

4 When used with security escutcheon

EN 1303:2015 security standard

category of use	durability	door mass and closing force	fire resistance	safety	corrosion	key related security	attack resistance
1	6	-	B	-	C	5	D ⁴

ASSA ABLOY is the global
leader in door opening solutions,
dedicated to satisfying
end-user needs for security,
safety and convenience

ASSA ABLOY

ASSA ABLOY Security Solutions
School Street
Willenhall
WV13 3PW
UK Tel: 0845 223 2124
UK Fax: 0845 223 2125
Export Tel: +44 1902 364107
Email: info@uniononline.co.uk
Web: www.uniononline.co.uk/unionkeyprime

Version 4 - August 2018