

### Product description

Version with strike plate, counterpart and spacer plates

Mainly suitable for use in wooden frames/doors

### Overview of Advantages

- Very quiet locking and unlocking, silent during permanent release
- The 352M escape door lock is especially designed as an additional locking system to secure doors along escape routes
- Suitable as an additional locking element for installation in fire doors
- Example for further usage options: double action swing door, revolving doors, interlocking doors, special doors
- Universal installation position, vertical and horizontal in the door frame or door leaf
- Holding force of 5000 N
- Safe unlocking under pre-load of up to 5000 N
- 12V DC to 24V DC multi-voltage, controlled DC voltage
- Monitoring contact and armature contact integrated
- Compatible for installation with models 351U and 351M

### Scope of delivery

- Supply includes round strike plate, round counterpart and four round spacer plates

### Note

- Suitable for fire doors according to British Standard BS476

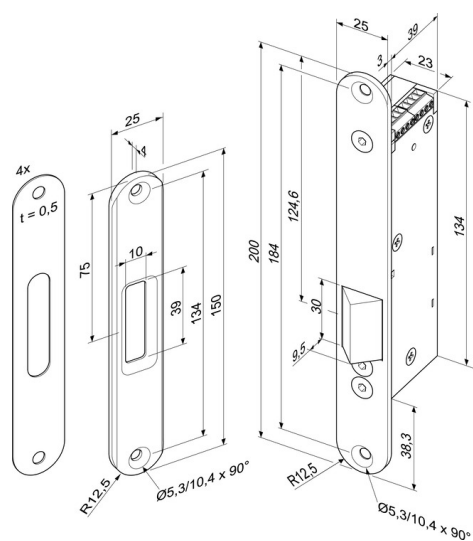
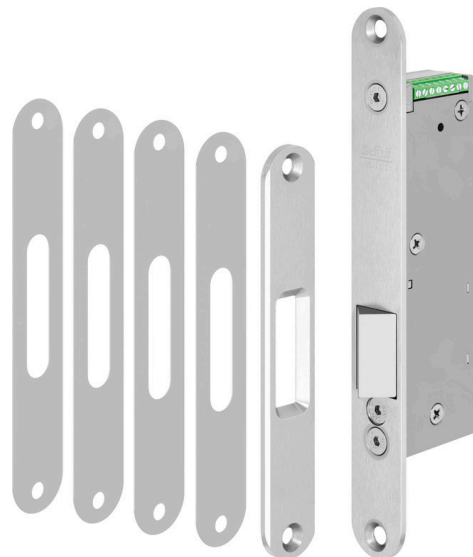
### Technical data

|   |                         |
|---|-------------------------|
| DIN-direction   | Universal               |
| Monitoring contact (RR)   | Yes                     |
| Diode (05)  | Yes                     |
| Fail-unlocked   | Yes                     |
| Armature monitoring contact   | Yes                     |
| Input operating voltage   | 12-24 V DC $\pm$ 15%    |
| Max. current consumption with motor operation (approx. 2 s) 12 V DC | 600 mA                  |
| Max. current consumption with motor operation (approx. 2 s) 24 V DC | 290 mA                  |
| Current consumption in continuous operation (locked) 12 V DC        | 360 mA                  |
| Current consumption in continuous operation (locked) 24 V DC        | 190 mA                  |
| Approvals   | ElVTR EN 13637          |
| Max. pre-load   | 5000 N                  |
| Break-in resistance   | 5000 N                  |
| Operating temperature range   | -15 °C to +50 °C        |
| Installation position   | Vertical and horizontal |
| Length  | 200 mm                  |
| Width   | 25 mm                   |
| Depth   | 42 mm                   |
| material bolt   | Steel                   |
| Rebate clearance  | 3 mm (2 mm – 4,5 mm)    |

### Accessories/Individual parts

| Order number    | Product   |
|-----------------|---|
| SET352E-25---00 | Counterpart (VarioFix) with spacer plates Square-cut counterpart with VarioFix adjustment |
| 352E-3-----00   | Spacer plate 3mm thickness, suitable for counterpart (VarioFix)                           |
| SET352R-25---00 | Counterpart with spacer plates Round counterpart  |

|                |                 |
|----------------|-----------------|
| Article number | 352M.80-----Q91 |
|----------------|-----------------|



EAN

4042203699007

---