



ASSA Triton Patented Master Key System

ASSA ABLOY

**Unrivalled security and master keying capability
giving you superior key control**

Experience a safer
and more open world

The first choice for high quality, patent protected cylinder systems

Unrivalled heritage and quality

Since manufacturing our first cylinder in 1939, we've built-up an unrivalled reputation for high quality, patented cylinder platforms, designed for the toughest and most demanding environments in the commercial sector.

With a heritage of quality and understanding the importance of high security, combined with forward thinking innovation, we are the market leaders in commercial patented cylinder systems.

Expertly designed and tested with precision engineering, our cylinders are designed to last, so you can be confident you have a durable and reliable system that will last for decades to come.

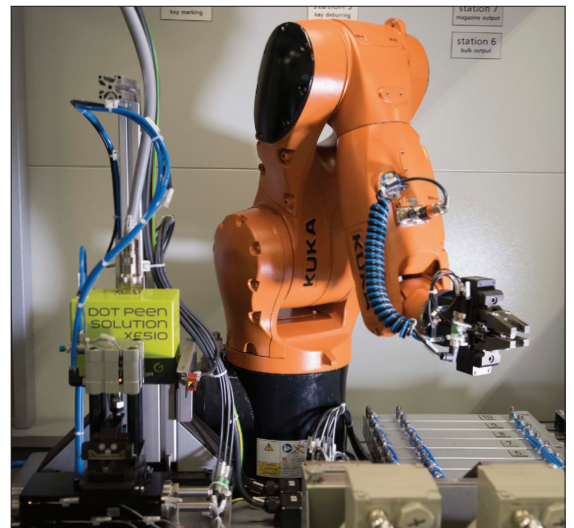


Master keying excellence

Our market leading master keying expertise is second to none.

Our specialist in-house master keying department will ensure your system is properly planned to accommodate all future expansion, therefore avoiding potentially costly long-term problems possible with an 'off the shelf' system.

Once your system has been designed the cylinders can be assembled and supplied by a local ASSA ABLOY Vantage Partner, specially trained to provide advice and ongoing support, with all elements of your master key system.



Expert service and support

In addition to expert service from the ASSA ABLOY Vantage Partners, our team of Sector Specialists are available to support. They have a wealth of experience, within a range of environments in the commercial sector.

Our Sector Specialists offer a full site survey audit and will provide advice and recommendations on your suite. They will then work together with your chosen ASSA ABLOY Vantage Partner to meet your requirements.

For a bespoke and optimised master key specification, consult with your ASSA ABLOY Sector Specialist and ASSA ABLOY Vantage Partner at the earliest stage of your project.



For your security and peace of mind

Key protection

Key protection defends against the more insidious threat of intruders, using unauthorised copies of keys to gain access.

For ASSA ABLOY the protection and safeguarding of the end user is essential. Our concept of key control is unique and is part of our commitment to our customers and protection of their assets, buildings and staff.

Effective security requires effective control and management of keys. This is true both for a single lock on a door and a large and complex master key system. If it is possible for anybody to obtain a key, the premises become vulnerable to unauthorised or criminal intruders.

On the other hand, if it is too difficult to obtain spare keys, legitimate users will be inconvenienced. To balance this problem, ASSA ABLOY offers six graded levels of key protection. Each step provides a different balance between convenience and security, enabling us to meet your precise requirements.

	P600	Triton 3900	Triton 5900	CLIQ® Remote
Step 6: Absolute Registration Keys are only available from ASSA ABLOY. A strict system of registration is laid down involving authorised signatures and a code-marked keycard.				✓
Step 5: Restricted Registration Keys are available from authorised ASSA Triton stockist. A registration procedure is agreed between the customer and a specific stockist, setting out the procedure for obtaining extra keys.			✓	
Step 4: Stockist Registration Keys are available from authorised ASSA ABLOY Vantage Partners. A registration procedure is agreed between the customer and a specific stockist, setting out the procedure for obtaining extra keys.	✓	✓		
Step 3: In-house Registration Key blanks are available for sale to recognised end users, such as hotels, colleges, and ships. Cutting is then directly under the control of the customer.		✓		
Step 2: Local Registration Keys can be purchased through authorised retailers. However, a Letter of Authority or official Order Form must be presented.				
Step 1: Unregistered Keys can be freely purchased through any retailer, with no restrictions on availability.				

No patent, no protection

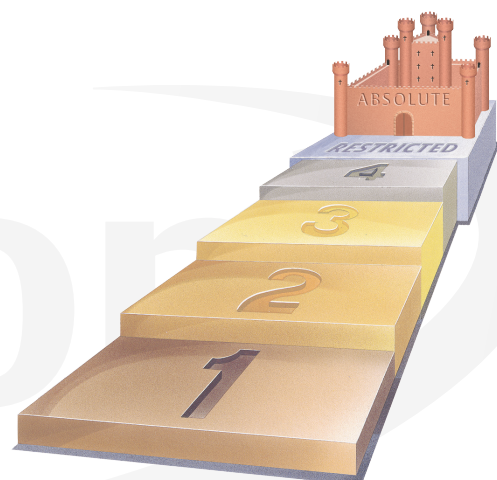
Effective key control systems rely on the fact that keys are only available from specific, authorised security centres.

Unfortunately, the abolition of copyright protection on keys from August 1999 has made it possible for anybody to produce and sell most types of keys, thus bypassing this protection.

The only exception to this is key systems which are protected by up-to-date patents. Manufacturers are still able to take legal action against unauthorised third parties distributing copies of patented keys without permission.

All registered key systems from ASSA ABLOY are protected by new international patents. We are committed to vigorously defending our patents whenever necessary to ensure the continued security of your premises.

ASSA Triton is patented until 2036 for your peace of mind.



The next generation of ASSA master key cylinder systems

ASSA Triton is our next generation of high security, patented, master key cylinders for the commercial sector.

Using innovative technology, ASSA Triton is purposely designed to provide the highest levels of security, to keep your premises totally secure.

ASSA Triton cylinders and keys are built to last and will provide many years of reliable use. They offer the same high quality and excellent durability you come to expect from an ASSA cylinder.

Why choose ASSA Triton for your new suite:



The highest security - Long life patent protection until 2036 giving you peace of mind over your key control. Cylinders exceed the requirements of BS EN 1303:2015 for your assurance of physical security.



One solution for all - A complete range of cylinders and padlocks to suit your requirements. The 5900 range also integrates with ASSA CLIQ® Remote for maximum security and flexibility.



Quality and durability unmatched - Cylinders and keys are precision engineered and rigorously tested, to ensure the highest levels of quality and durability.



Total service and support - Both our exclusive ASSA ABLOY Vantage Partner network and our experienced Sector Specialists, are here to guide your purchase and after-sales service, for complete support



Unrivalled master keying capability - A system with 1.5 billion combinations guarantees unique systems for the 5900 range. This allows the requirements of the largest and most complex suites to be met.



Introducing ASSA Triton



The next generation of ASSA master key cylinder systems

BS EN 1303:2015 security standard

Category of use	Durability	Door mass and closing force	Fire resistance	Safety	Corrosion	Key related security	Attack resistance
1	6	–	B	–	C	6	D*

- Certified security, compliant with BS EN 1303:2015*
- 5 minutes drilling resistance
- Enhanced pulling resistance
- Picking resistance
- Bumping resistance
- 500,000 cycles performance in durability test**
- 240 hours corrosion resistance, above and beyond the 96 hours standard
- Fire tested in accordance with BS EN 1634-1:2000

*when used with security escutcheon **accelerated test

ASSA Triton is purposely designed with unrivalled master keying capability, with 1.5 billion combinations which are never repeated and a comprehensive range of cylinders and padlocks.

The system is suitable for large and complex suites in healthcare, education, commercial sectors, public buildings and any areas requiring a highly secure and durable cylinder platform.

Healthcare



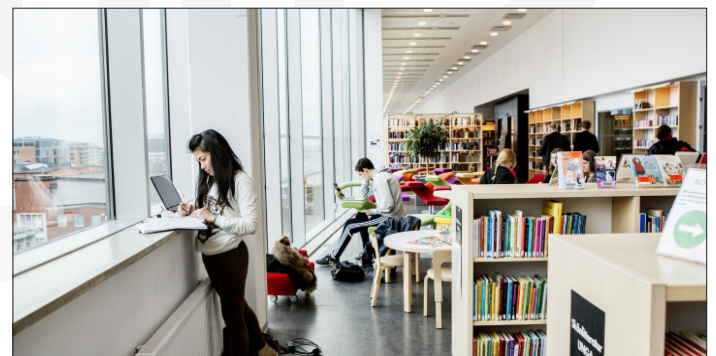
Education



Commercial



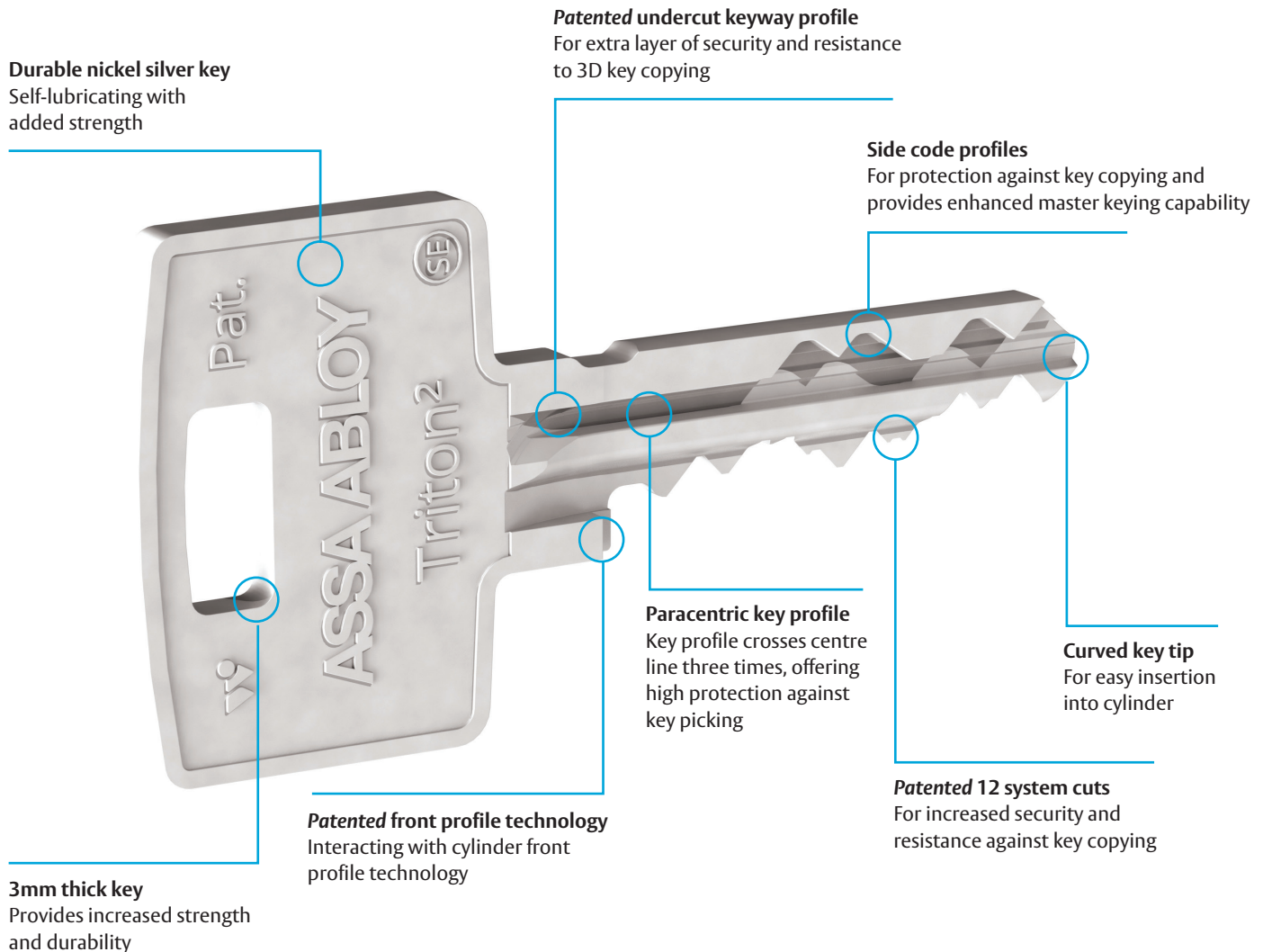
Public Buildings



The key to high security



Security and control starts with the key



Patented key control for your security

ASSA Triton has three overlapping key patents, to ensure long life patent protection until 2036. These multiple key patents provide secure key control and reassurance that your keys can't be copied.

Authorised key cutting only

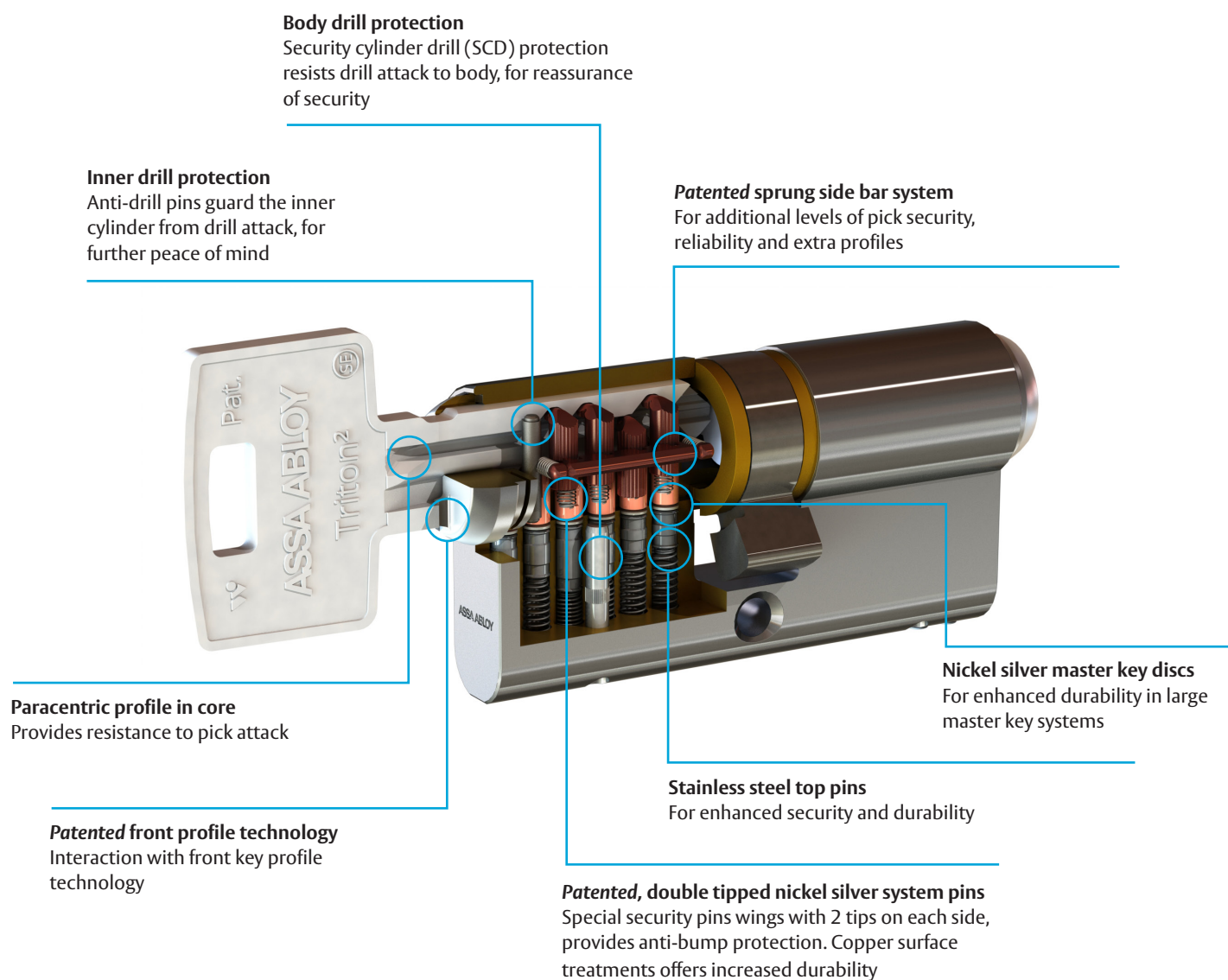
Our protected key cutting programme requires ASSA ABLOY to provide the ASSA ABLOY Vantage Partner network, authorisation for key cutting programmes to be released.

What's more, the additional profiling process for the 5900 range, requires ASSA ABLOY to authorise and send encrypted key cutting files to the ASSA ABLOY Vantage Partners. This ensures the highest level of key cutting security.

Unique side coding

Unique side code key profiles are available on the 5900 range through our ASSA ABLOY Vantage Partner network, ensuring pure exclusivity for your suite.

High quality, high security cylinders built to last



Long life patented cylinder protection

ASSA Triton cylinders include patent protection and when combined with the key patents, provides long life patent protection until 2036.

Designed to be highly secure

ASSA Triton cylinders are highly secure, with anti-pick, anti-pull, anti-drill and anti-bump protection built in. They exceed the latest BS EN 1303:2015 certification, so you can be sure ASSA Triton will resist known attack methods and your premises remains secured.

Unrivalled master keying capability

The 6 pin configuration combined with profiling on the side bar (5900 range) offers unrivalled master keying capabilities, with 1.5 billion differs available and code uniqueness. This allows the requirements of largest and most complex suites to be satisfied.

One solution for all



A full range of cylinders to suit all your requirements

ASSA Triton is available in a full range of cylinder shapes, allowing the system to be used with all common types of lock cases. A full range of padlocks is also available to suit your required level of security.

The complete range allows the installation of one system that covers all applications, from external and internal doors, to cabinets and padlocks.

Scandinavian Oval

For use with ASSA Modular, Connect and Narrow Profile lock cases. The cylinder is fixed to the lock case with two hardened steel screws, supplied with the accessory set. ASSA accessories (see page 13) must be used.



3901/5901
Single cylinder (outside)

3903/5903
Single cylinder (inside)

3902
Double cylinder



3907/5907
Single rim cylinder (outside)

3909/5909
Single rim cylinder (inside)

3908
Double rim cylinder

For use with ASSA rim and Connect narrow profile lock cases. The cylinder is fixed to the lock case with two brass screws which can be cut to length. Supplied with rim cylinder sleeve.

Scandinavian Round

For use with ASSA Modular and Connect lock cases. The cylinder is fixed with four high security hardened steel screws, supplied with the accessory set. ASSA accessories (see page 13) must be used.



3911/5911
Single cylinder (outside)

3913/5913
Single rim cylinder (outside)

3912
Double rim cylinder

Round Threaded

For use with locking devices accepting screw-in cylinders. State lock type when ordering to ensure that correct cam is supplied.

4451 round threaded cylinders are also available with micro switch for use as a momentary action key switch.

For use with rim locks and other locking devices accepting rim cylinders. Supplied with 5mm spacer ring and fixing screws.



3951/5951
Single mortice cylinder

3952/5952
Double mortice cylinder



3957/5957
Rim cylinder

A full range of cylinders to suit all your requirements

Euro profile

For use with locks accepting Euro profile cylinders. Cylinders are supplied with fixing screw.

*Standard lengths are:

- Single 40mm and 45mm
- Double 61mm and 71mm
- W/Turn 61mm and 71mm

Extended length cylinders are also available.

Decorative and security accessories are available.

Optional functions

A1 - Classroom, clockwise

B1 - Classroom, anticlockwise

C1 - Clutch

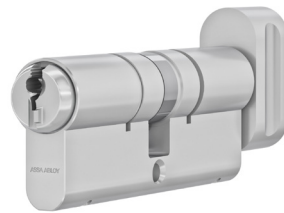
DA1 - Dual action

The M20 high security Euro cylinder range is also available offering high resistance to snapping.

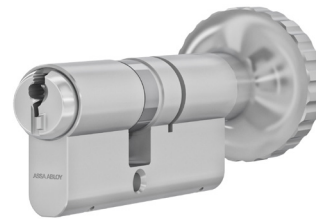


3922/5922
Double cylinder

3923/5923
Single cylinder



3927/5927
Single cylinder with
oval turn



3924/5924
Single cylinder with
small turn

3921/5921
Single cylinder with
large turn

Oval profile

For use with locks accepting Oval profile cylinders. Cylinders are supplied with fixing screw.

*Standard lengths are:

- Single 40mm and 45mm
- Double 61mm and 71mm
- W/Turn 61mm and 71mm

Also available in:

- Single 50mm (+10)
- Double 81mm (+10+10)
- W/Turn 81mm (+10+10)

Decorative and security accessories are available.

Optional functions

A1 - Classroom, clockwise

B1 - Classroom, anticlockwise

C1 - Clutch

DA1 - Dual action

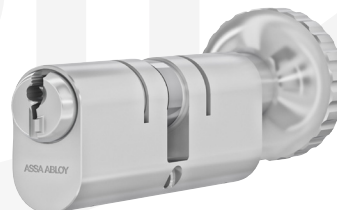


3932/5932
Double cylinder

3933/5933
Single cylinder



3937/5937
Single cylinder with
oval turn



3934/5934
Single cylinder with
small turn

3921/5921
Single cylinder with
large turn

ASSA Triton is available in a full range of padlocks to suit your required level of security.

Class 2

- Padlock body manufactured from extruded brass and surface black chrome plated
- Shackle of rustproofed hardened steel, 8mm or 10mm diameter
- Drainage holes in the padlock body prevent freezing. No external screws or rivets
- Tensile strength over 1½ tons
- Green stripes indicate Security Grade 3 to BS EN 12320
- 52mm clearance on extended shackle



39241/59241
Snap



39243/59243
Key locking
extended
shackle



39246/59246
Key locking
10mm diameter
shackle



39249/59249
Key locking
closed
shackle

Class 3

- Padlock body manufactured from hardened steel and surface black chrome plated
- Shackle of rustproofed hardened steel, 10mm diameter
- Drainage holes in the padlock body prevent freezing. No external screws or rivets
- Tensile strength over 4½ tons
- Blue stripes indicate Security Grade 4 to BS EN 12320



39341/59341
Key locking



39349/59349
Key locking
closed
shackle

Class 4 / Class 5

- Padlock body manufactured from hardened steel and surface black chrome plated
- Shackle of rustproofed hardened steel, 13mm diameter
- Drainage holes in the padlock body prevent freezing. No external screws or rivets
- Tensile strength over 10 tons
- Red stripes indicate Security Grade 5 (open shackle) or Grade 6 (closed shackle) to BS EN 12320



39411/59411
Key locking



39549/59549
Key locking
closed
shackle

Weather resistant

- Padlock body manufactured from hardened steel
- Shackle manufactured from boron steel
- IP68 rated
- Fulfils the requirements of EN 12320 grade 3
- Available in alternative shackle heights
- Operating temperatures: -40° F to +130° F
-40° C to +80° C

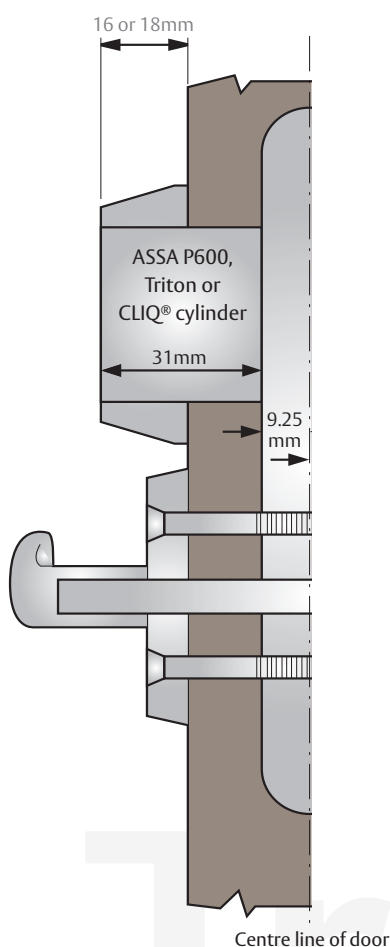


23925/25925
Grade 3 weatherproof
25mm shackle

Door hardware with exceptional levels of quality, safety and security

Standard accessory sets for Scandinavian Oval cylinders used with Modular and Connect locks are available in four sizes. These are designed to be fitted to a standard 44mm or 54mm door. For security reasons it is imperative that the cylinder does not protrude more than 2mm from the face of the cylinder ring.

If it is necessary to fit a cylinder to a door of unusual thickness, we can supply different sizes of screws and cylinder rings. Extension pieces, which bring the cylinder further out from the centre line of the door, are also available. Please contact your ASSA ABLOY Vantage Partner for further details.



Accessory Sets Scandinavian Oval Cylinders				
Door Thickness	256 Ext. Cyl. Ring Int. Turn	6256 Ext. Cyl. Ring Int. Cyl. Ring	18256 Ext. Cyl. Ring Int. Blind Rose	2356 Ext. Blind Rose Int. Cyl. Ring
44mm	18mm	18mm	18mm	18mm
54mm	13mm	13mm	13mm	13mm

Accessory sets for Scandinavian Round cylinders used with Modular and Connect locks are available in two sizes. Combined with extension pieces and longer screws, they are suitable for door thicknesses up to 100mm.

Accessory Sets Scandinavian Round Cylinders		
Door Thickness	3212 Ext. Sleeve Double	3212B Ext. Sleeve Single
44mm	13mm	13mm
54mm	8mm	8mm

High security cylinder escutcheons for Euro Profile cylinders used with Compact locks are available in two sizes: 6mm and 8mm. As these cylinders can be ordered in size increments of 5mm, the correct size of cylinder should be specified to suit the door thickness and escutcheon size selected. A full range of decorative accessory sets for Euro and UK Oval Profile cylinders are also available.

To calculate the correct cylinder ring size for Scandinavian Oval cylinders used on Modular, Connect and Small Case locks: Subtract half the door thickness from the cylinder length plus half the lockcase width (40.25mm). Specify an accessory size no more than 2mm smaller than the result.

Example: 44mm door: subtract half this (22) from 40.25 to give 18.25. Use 18mm cylinder ring. (18mm is less than 2mm smaller than 18.25mm).

ASSA high security cylinder systems



The first choice for high quality, patent protected cylinder systems

ASSA cylinders are used in some of the most prestigious and demanding environments around the world. Take a look below at some of our UK customers who have made us first choice for their patented, master key suites.

Doncaster Royal Infirmary: Patent Protection



The historic Doncaster Royal Infirmary required a durable, high quality master keyed cylinder system to secure their busy hospital. They selected the ASSA P600 cylinder system due to its patent protection and unmatched reliability.

Festival Place: Key management



Busy shopping centre Festival Place in Basingstoke, were looking for a high quality, durable cylinder system, with electro-mechanical capability. They chose ASSA CLIQ® Remote, which utilises ASSA DP cylinders. This allowed them to solve key management issues and have total key control.

Loughborough University: Electro-mechanical integration



The highly regarded Loughborough University, selected ASSA DP cylinders and ASSA CLIQ® Remote to secure their campus. The University was looking to work with a trusted manufacturer and ASSA ABLOY delivered a master key system for the buildings on the campus to work effectively.

Twycross Zoo: Security and efficiency



Leading and internationally renowned Twycross Zoo needed a master keyed cylinder system with access control functionality, to improve site security and access for site users. They chose ASSA CLIQ® Remote and ASSA DP cylinders, which allowed the Zoo to operate more efficiently, saving them time and money.

The ASSA high security range



Door hardware with exceptional levels of quality, safety and security

All ASSA ABLOY products are designed and developed around the concept of whole life cycle costing.

This takes into consideration not just the initial price of the product, but repair, maintenance, refurbishment costs over the life of the product. A product with lower whole life cycle costs will save you time and money in the long term and provides true value for money.



ASSA ABLOY products achieve exceptional life cycle costs as they are purposely designed and tested to work together, giving you an unbeatable package. When you specify an ASSA range product or an ASSA ABLOY product, you can be sure of guaranteed durability and excellent performance.

Reasons to choose an ASSA door hardware package:



Durability guaranteed - The ASSA range is purposely designed and tested to work together for guaranteed durability. We are able to offer an extended performance guarantee up to 15 years when taking our combined package.



Assurance of conformity - That your total door solution package conforms to the relevant legislation, keeping your building and users safe.



One supplier, one point of contact - Dealing with one trusted manufacturer you will receive expert support, for all your needs.

Our ASSA ABLOY Sector Specialists and Vantage Partners can recommend the ideal packages for your requirements.

ASSA ABLOY Opening Solutions UK & Ireland

Door Hardware Group
School Street
Willenhall
West Midlands
WV13 3PW

+44 (0)845 223 2124
csdorders@assaabloy.com

www.assaabloy.com